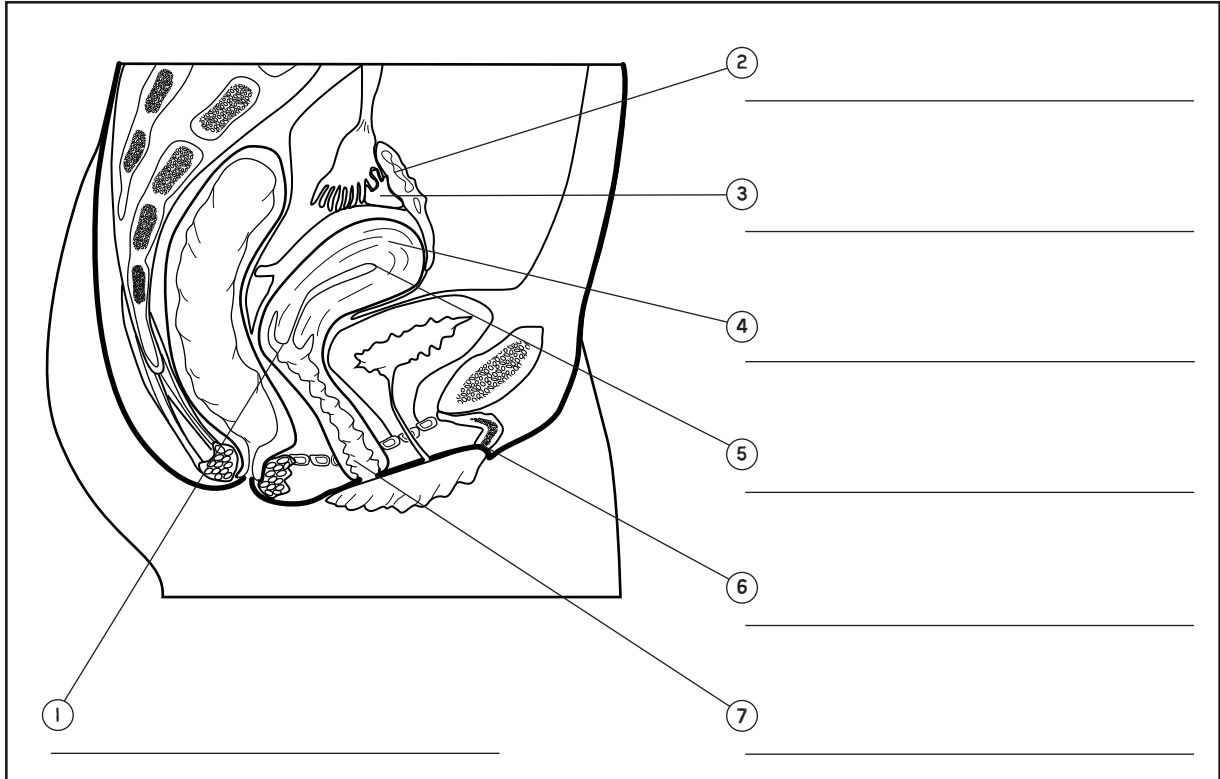


THE FEMALE REPRODUCTIVE SYSTEM



Complete this concept review handout and keep it as a record of what you have learned.

ANATOMY OF THE FEMALE REPRODUCTIVE SYEM



DEFINITIONS

- Oogenesis is _____

- The ovarian cycle is _____

- The menstrual cycle _____

THE FEMALE REPRODUCTIVE SYSTEM**Oogenesis and the ovarian cycle, based on a 28-day cycle**

Period	Event	Hormones
Days 1 to 12	<hr/> <hr/> <hr/> <hr/> <hr/>	<hr/> <hr/> <hr/> <hr/> <hr/>
Days 13 and 14	<hr/> <hr/> <hr/> <hr/> <hr/>	<hr/> <hr/> <hr/> <hr/> <hr/>
Days 15 to 28	<hr/> <hr/> <hr/> <hr/> <hr/> <hr/> <hr/> <hr/> <hr/> <hr/>	<hr/> <hr/> <hr/> <hr/> <hr/> <hr/> <hr/> <hr/> <hr/> <hr/>

28-day menstrual cycle

Phase	Event	Hormones
Days 1 to 5 Menstrual phase	<hr/> <hr/> <hr/>	<hr/> <hr/> <hr/>
Days 6 to 14 Proliferation phase	<hr/> <hr/> <hr/>	<hr/> <hr/> <hr/>
Days 15 to 28 Secretory phase	<hr/> <hr/> <hr/>	<hr/> <hr/> <hr/>